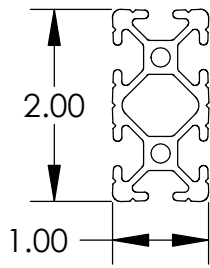
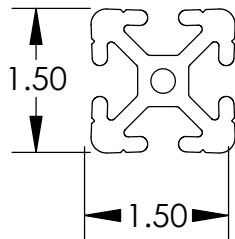


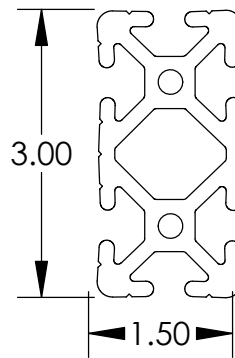
10317
1010



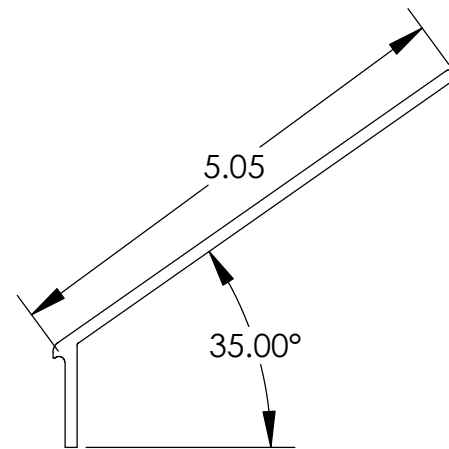
10201
1020



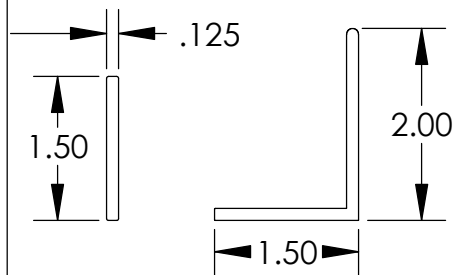
10202
1515



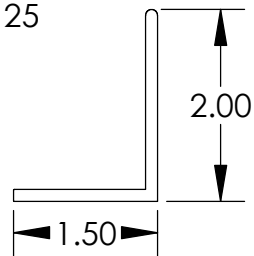
10326
1530



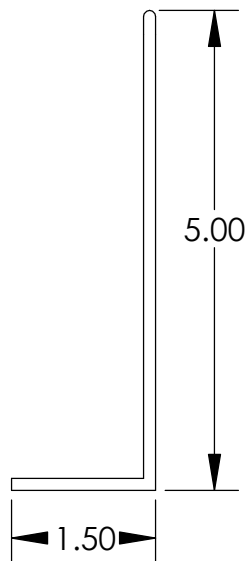
10334
FLARED EXTENSION RAIL



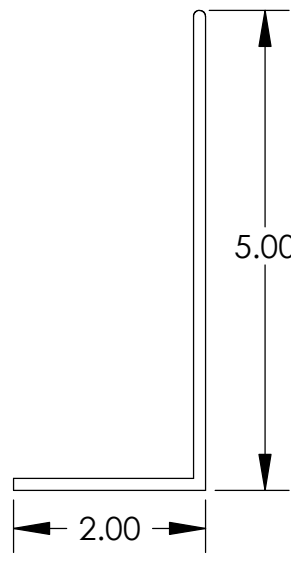
12052
FLAT
RAIL



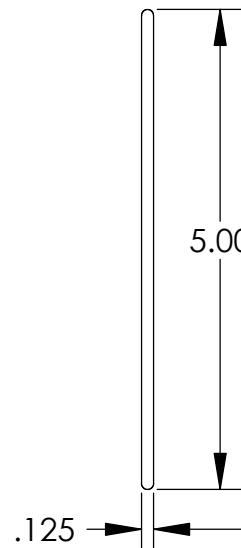
10019
1.5 X 2 RAIL



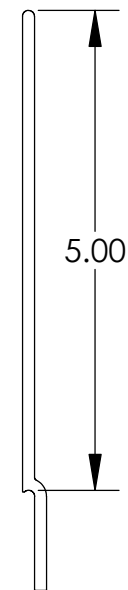
10069
1.5 X 5 RAIL



10299
2 X 5 RAIL



15073
SLIDER BED



10335
EXTENSION RAIL

THE INFORMATION CONTAINED IN THIS DRAWING IS THE SOLE PROPERTY OF HARVARD FACTORY AUTOMATION, INC. ANY REPRODUCTION OR USE IN WHOLE OR IN PART WITHOUT THE WRITTEN CONSENT OF HFA INC. IS PROHIBITED

DWG. NO. 00000
DATE 01-23-02
DRAWN CKW

DESCRIPTION ALUMINUM EXTRUSION PROFILES
REV. - SHEET 1 OF 1 SCALE NA MATERIAL 6061-T6 CLEAR ANODIZED CUSTOMER NA
HARVARD FACTORY AUTOMATION, INC.

UNLESS OTHERWISE NOTED DIMENSIONS ARE IN INCHES
TOLERANCES ARE:
.XXX ----- ±.005
.XX ----- ±.01
ANGLES---- ± 1°